

IE

A-A=

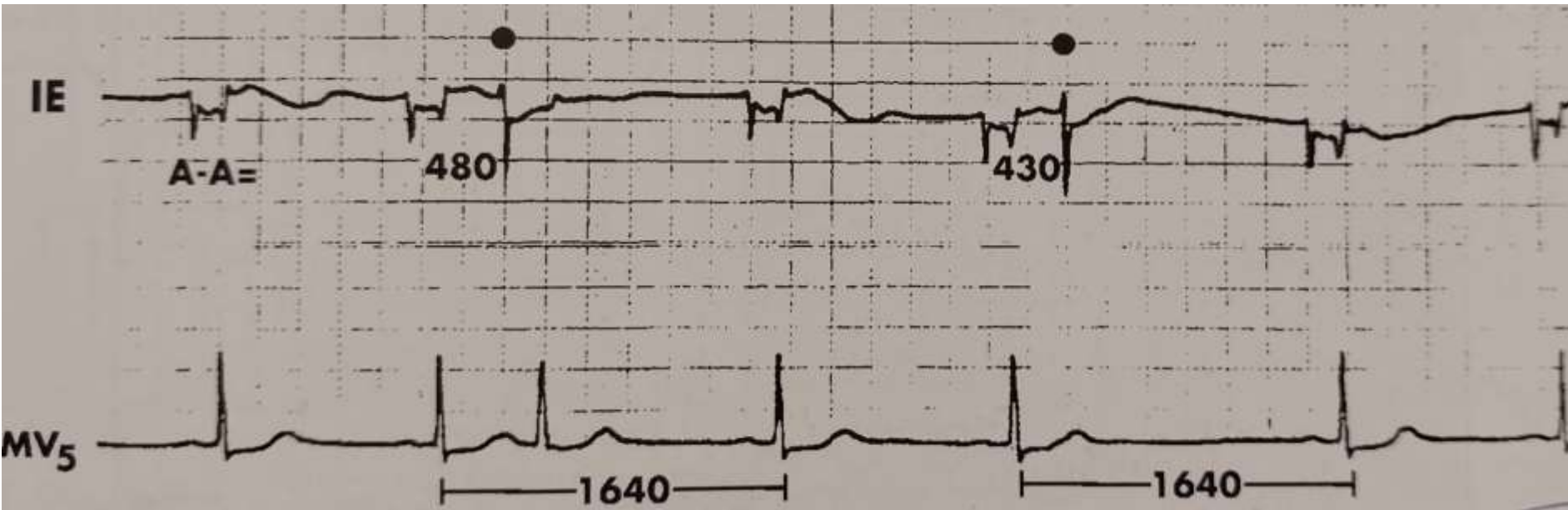
480

430

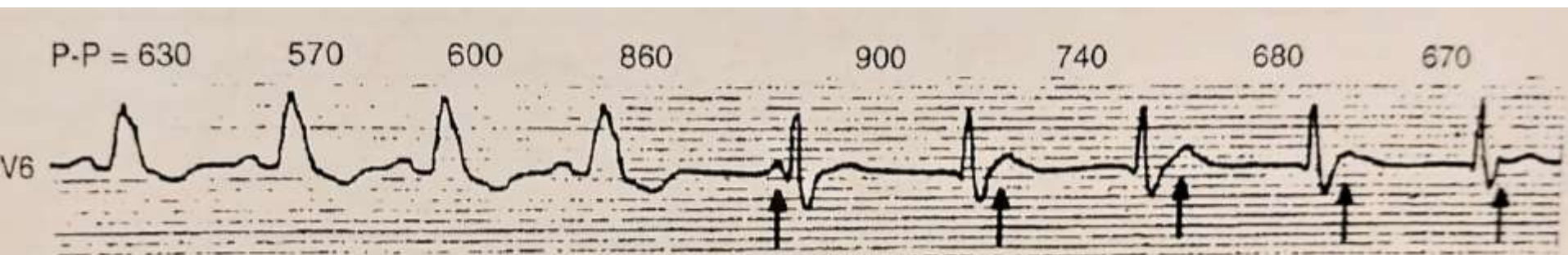
MV<sub>5</sub>

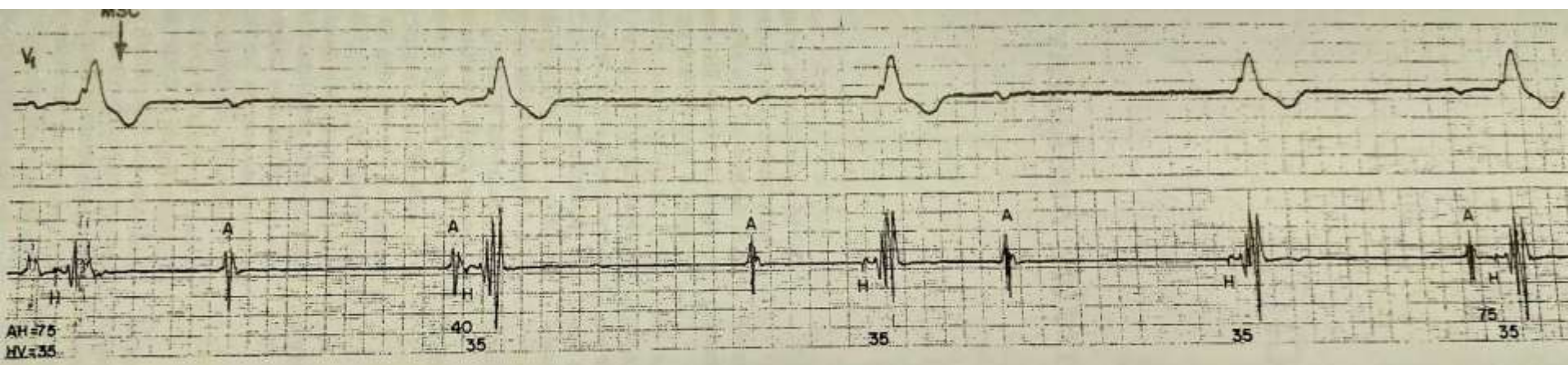
1640

1640



# Mecanismos variados





# Bloqueos AV

- Primer grado
- Segundo grado
  - Wenckebach (tipo I)
  - Wenckebach alternante
  - Mobitz (tipo II)
  - Pseudo Mobitz
  - 2 a 1
  - Alto grado
- Tercer grado



Normal



Bloqueo de 1<sup>er</sup> grado



Tipo I



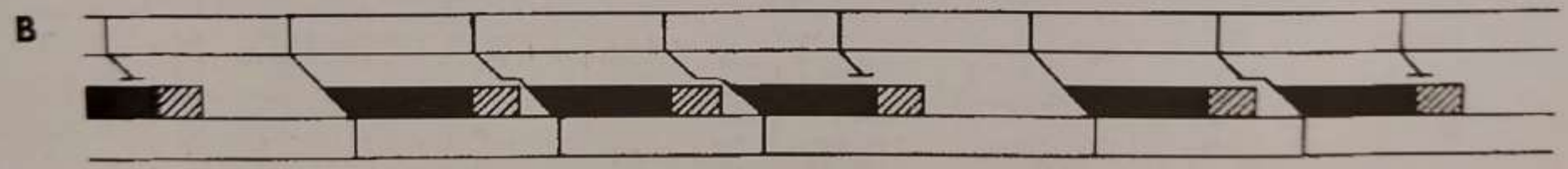
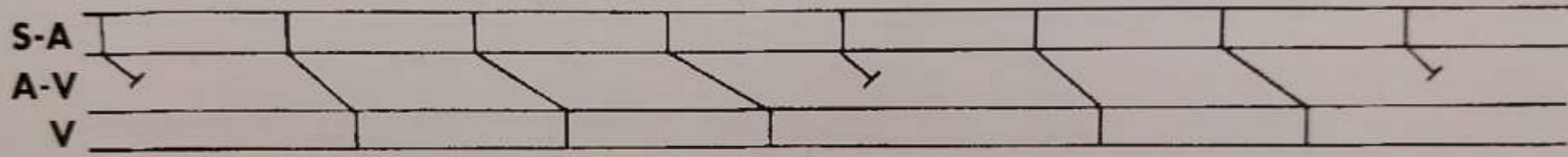
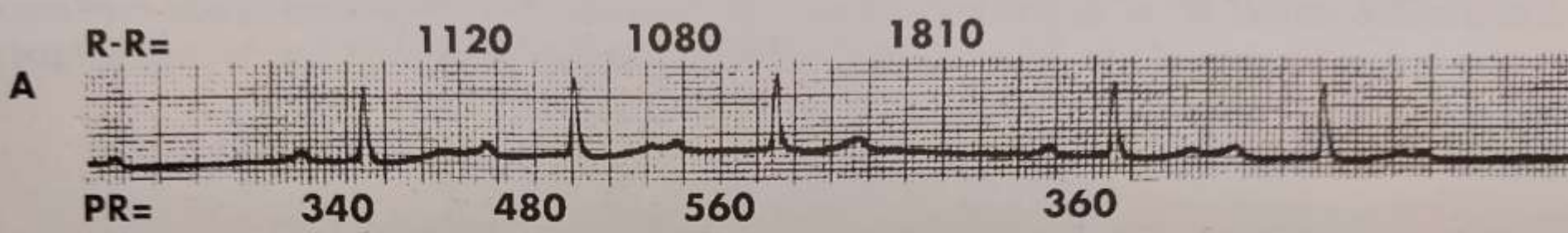
Tipo II

} Bloqueo de 2<sup>o</sup> grado

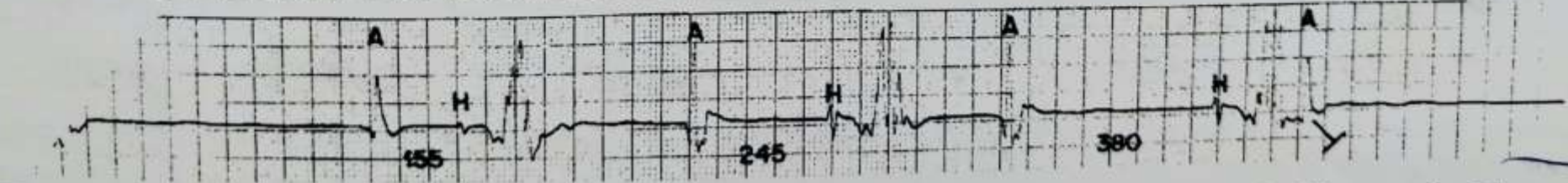
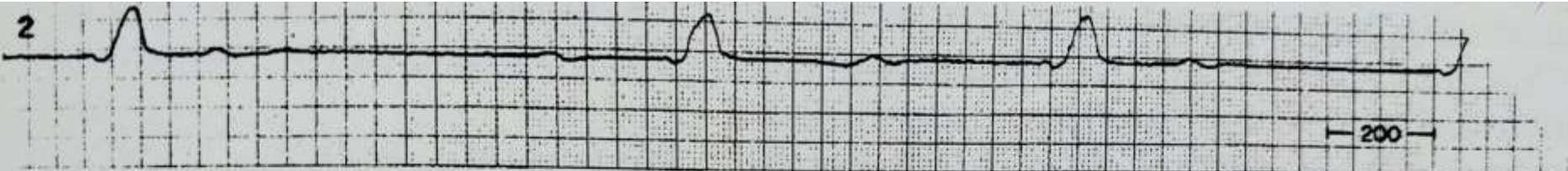


Bloqueo completo

■ PRA    ▨ PRR    □ RT

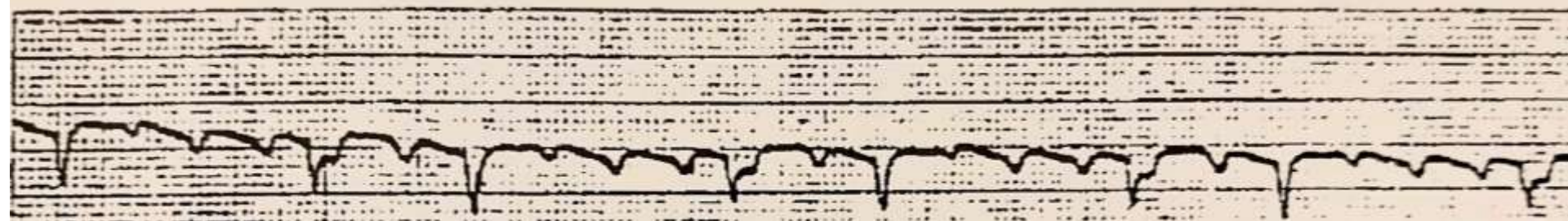






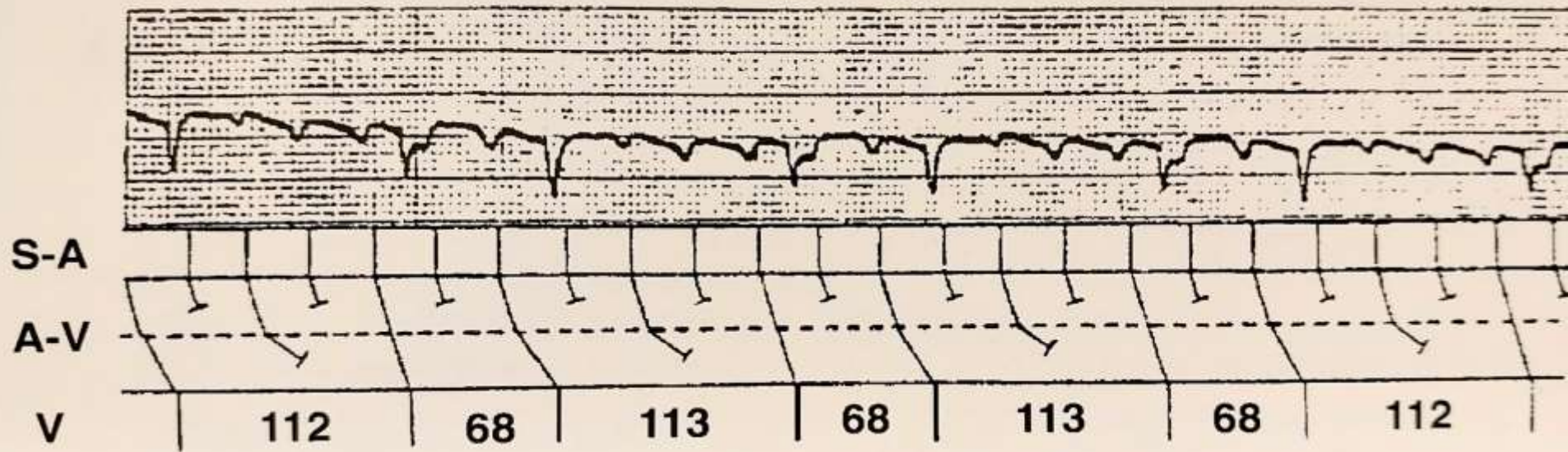
... letidos conduidos en c

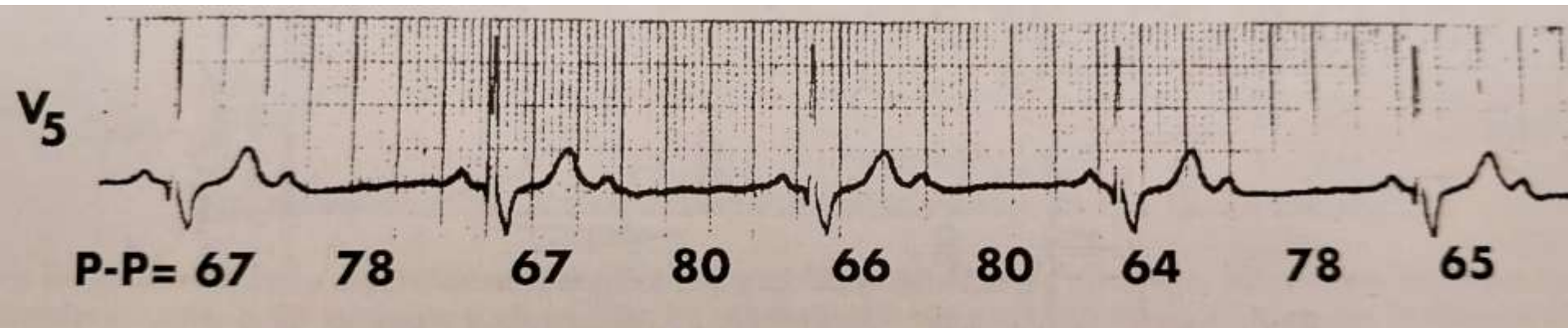
$F-F=30$



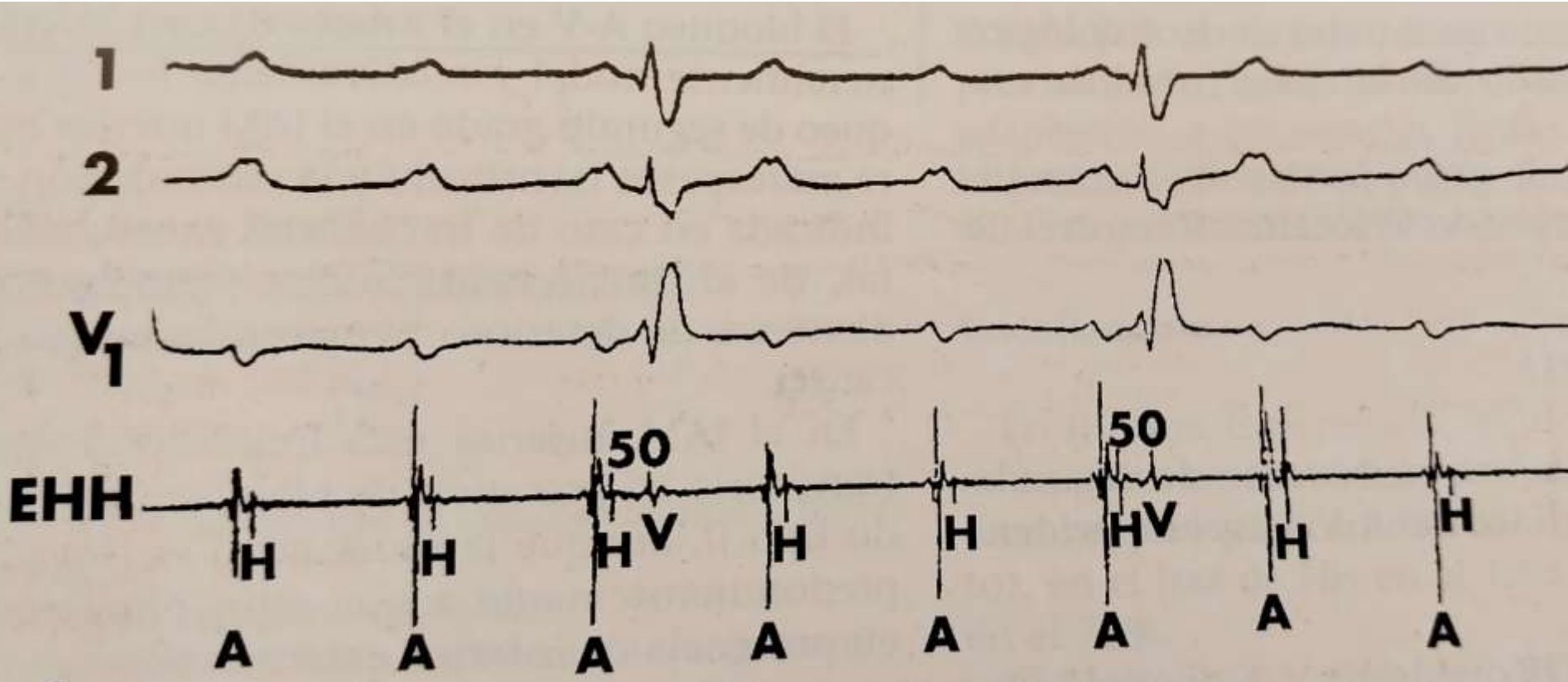
# Wenckebach alternante

F-F= 30

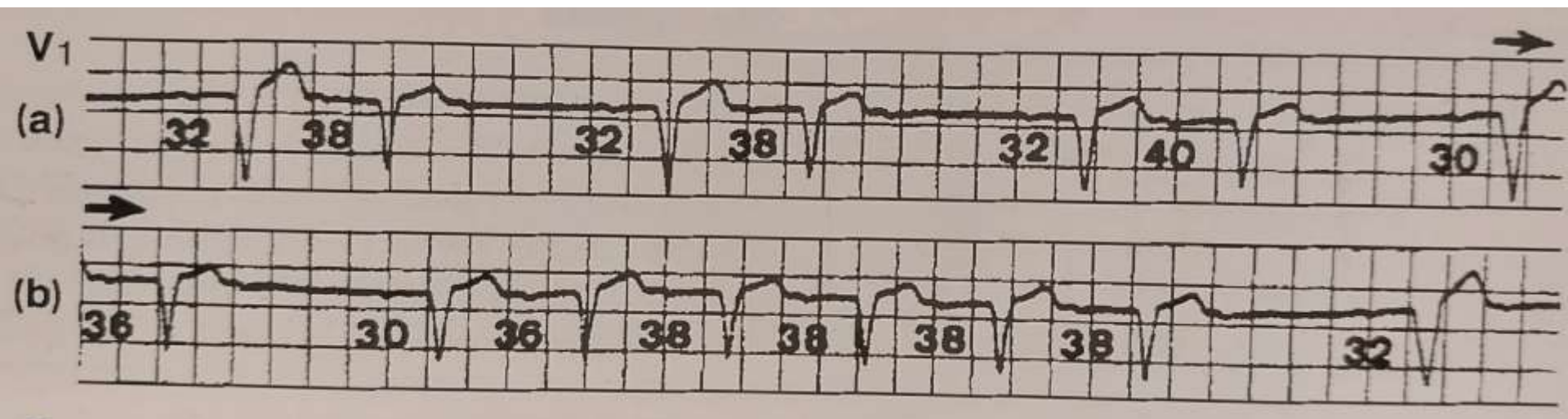


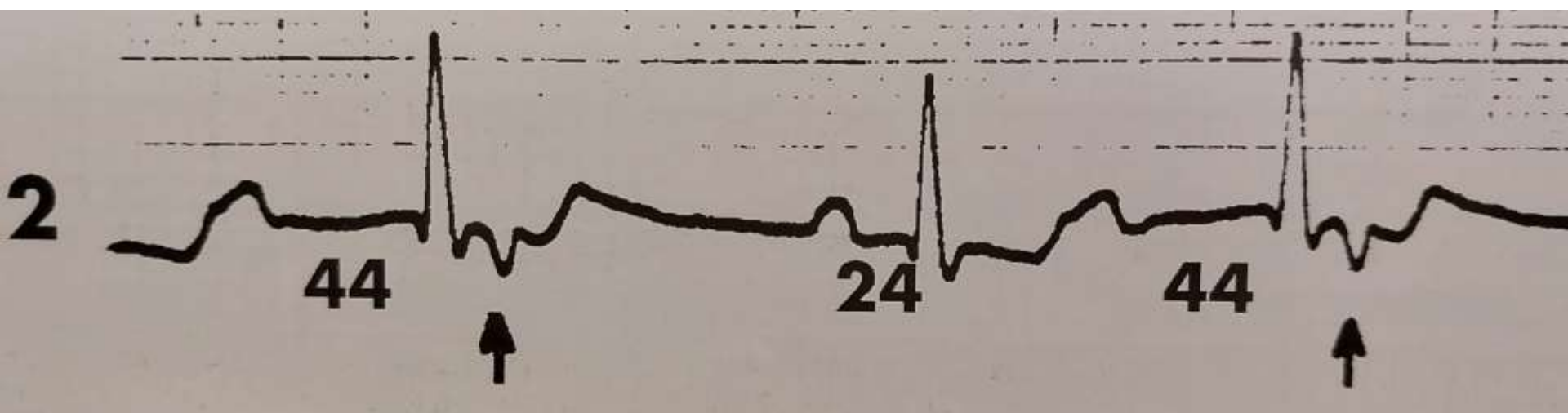


# Bloqueo AV de alto grado

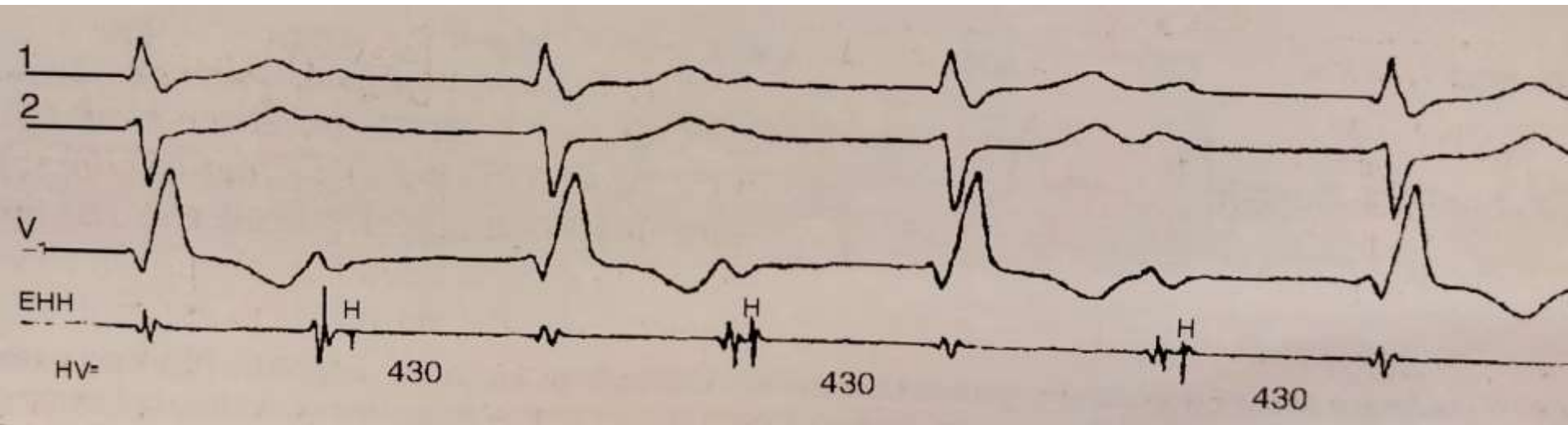


# Pseudo Mobitz



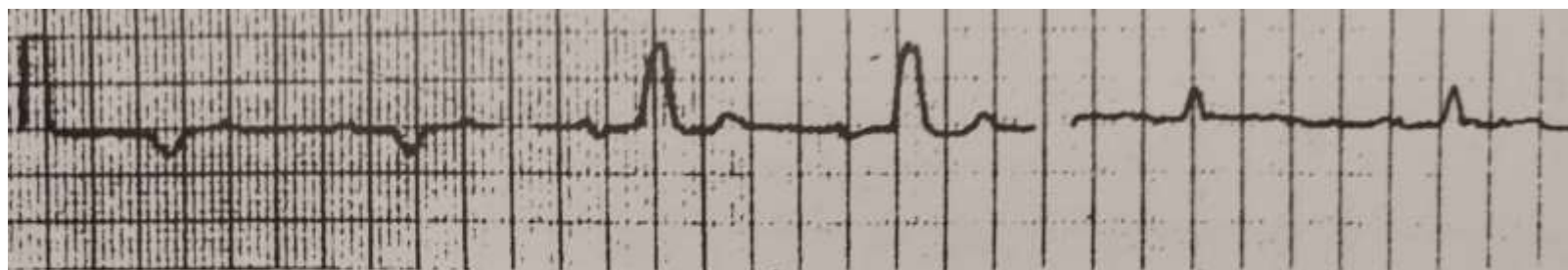


# Bloqueo trifascicular



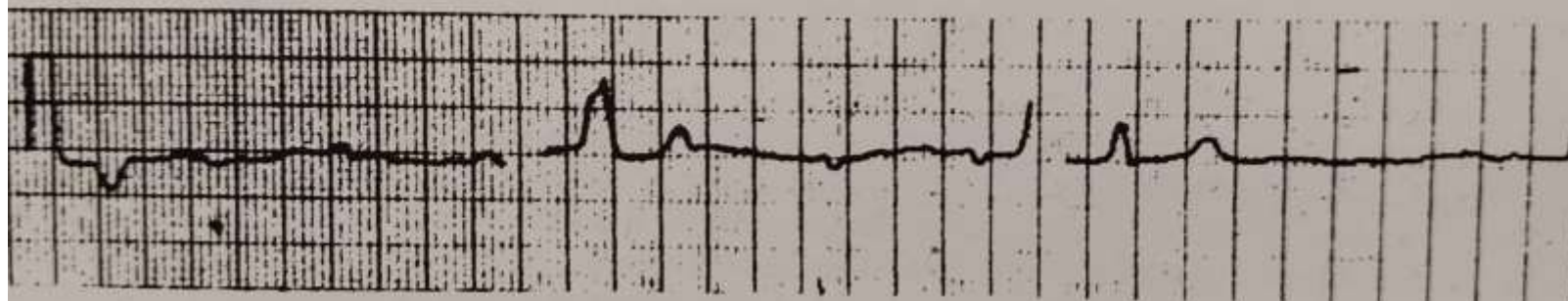


# Bloqueo intraesfuerzo



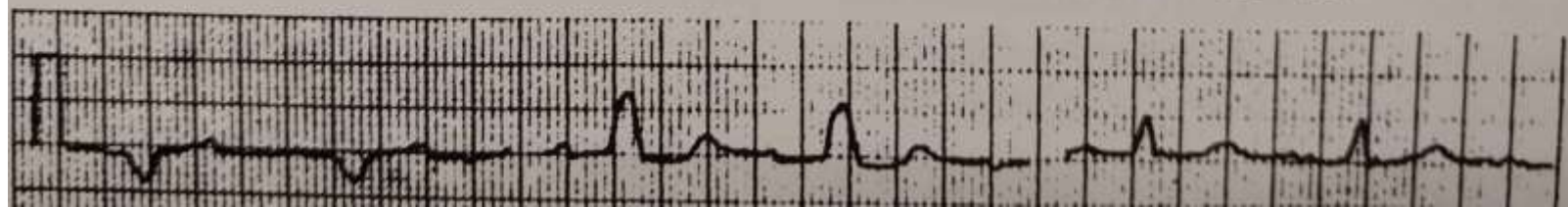
MAX ESFUERZO EC: 33

II - V2 - V5

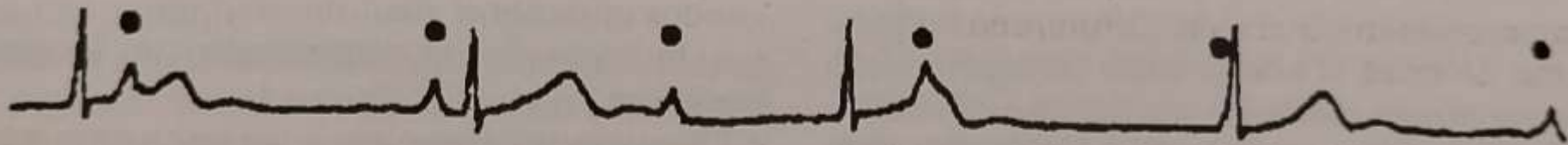


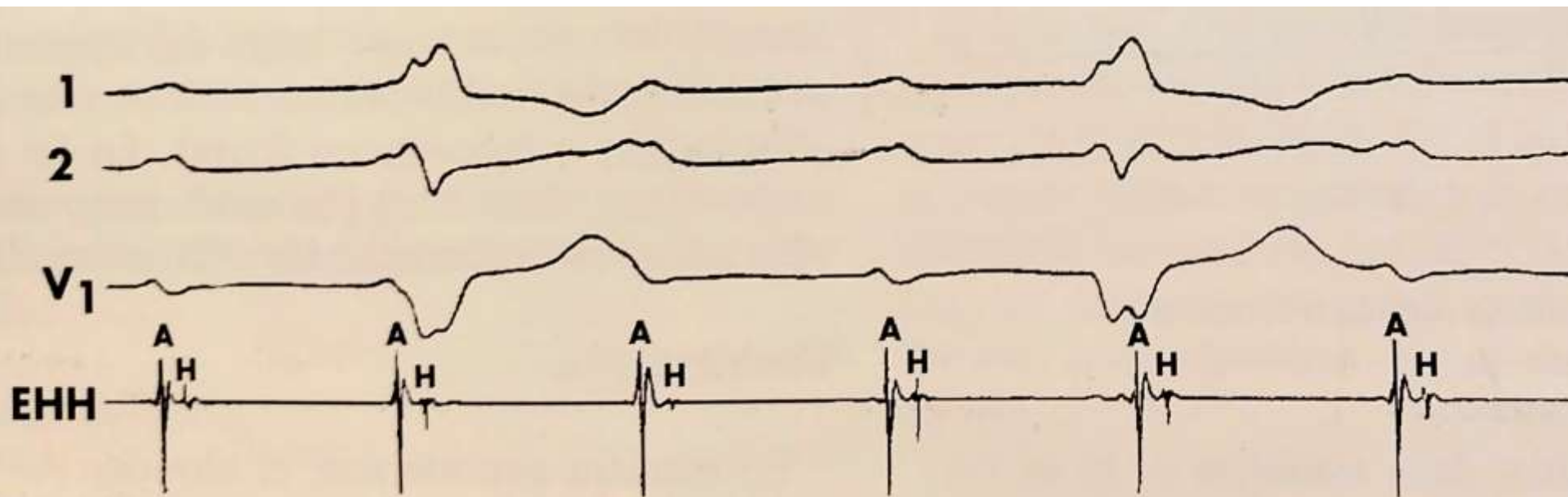
RECUPERACION FC: 73

II - V2 - V5

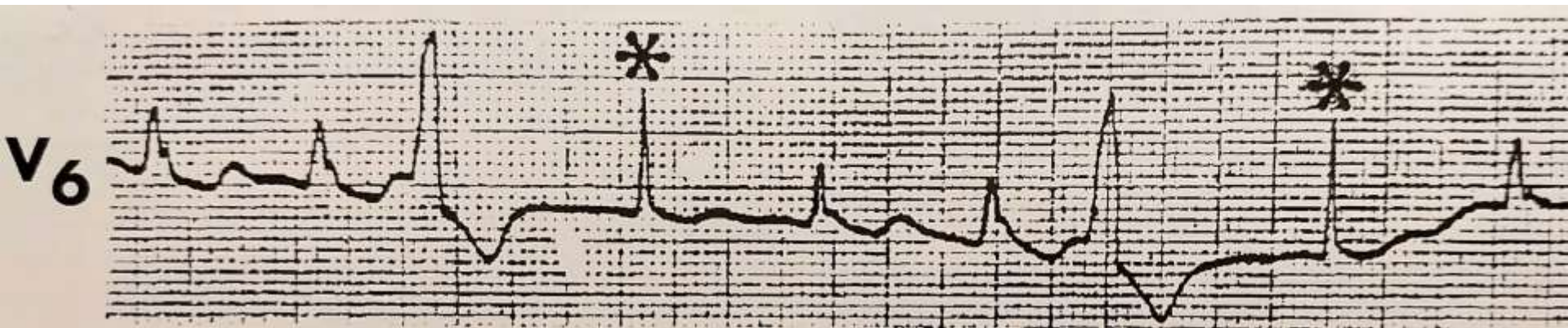


2

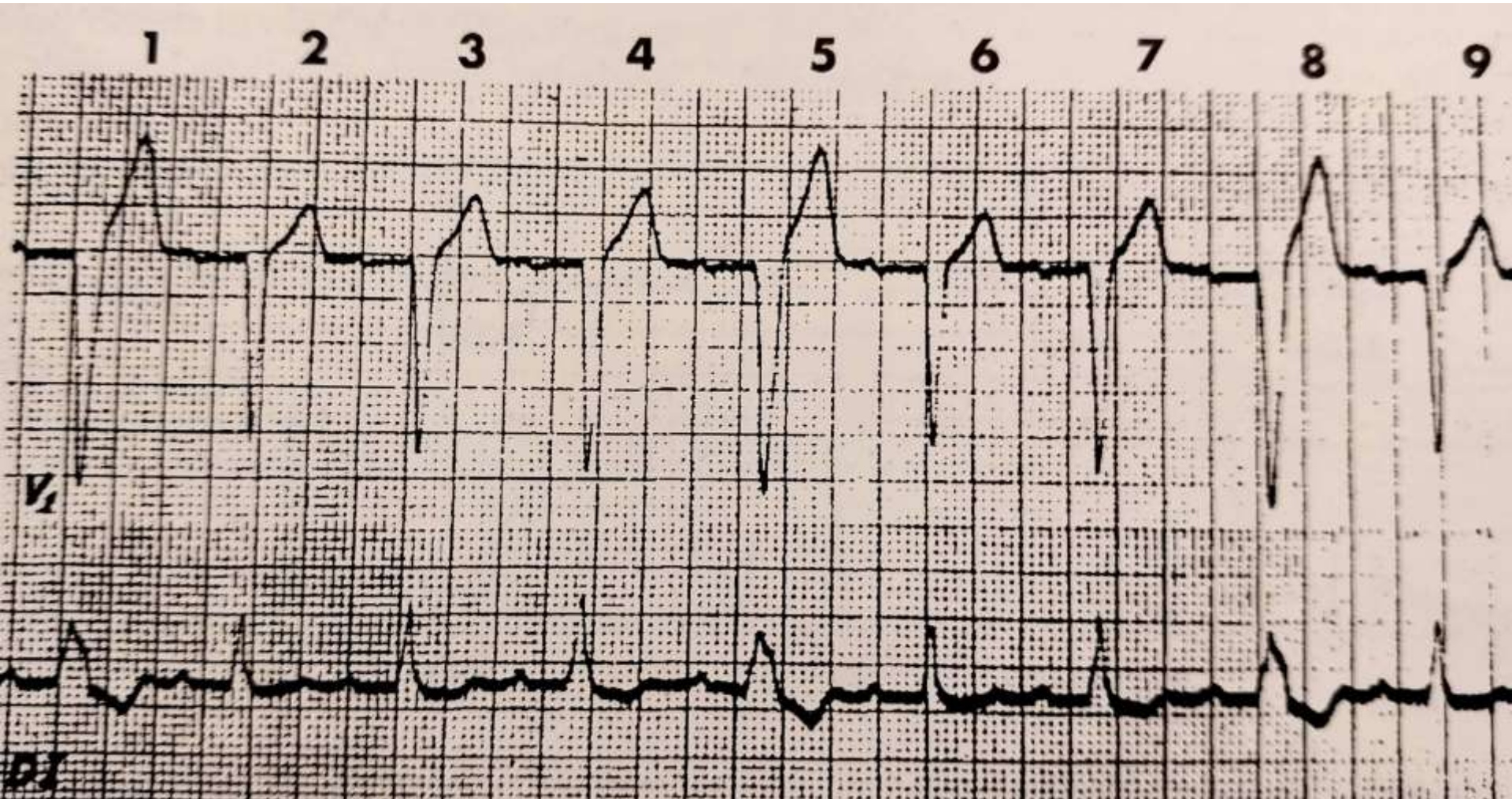




# Bloqueo en fase 3



# Wenckebach en la rama izquierda



V<sub>1</sub>

